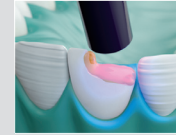


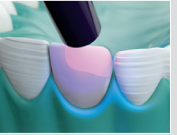
1) Determine the right shade of composite at the very beginning of the appointment. If a difficult shade, try different composites and/or combinations of composite without bonding agents. It is important to do this before drying the working area as dehydration of the tooth will alter the color.



8) Light cure the adhesive according to the manufacturer's instructions.



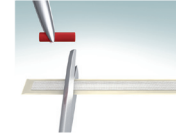
15) Light cure the tooth according to the composite manufacturer's instructions.



2) Ensure a dry working area, using a rubber dam is highly recommended.



9) Remove Dentapreg® UFM from the blister and cut it with scissors to the required length. Do not touch the protected strip with bare hands. The use of powder-free latex or nitrile gloves is recommended. Store the remaining strip in the supplied light protection box and keep it in a dark place, preferably in a refrigerator. In this manner, you can store the strip for up to 4 weeks without its properties deteriorating significantly.



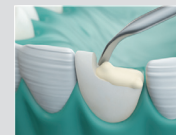
16) Finish the tooth, adjust it in the occlusion and polish it.



3) Isolate the interproximal areas using a matrix. To insure the adjoining teeth stay clean, use teflon tape to cover them. This will make finishing and cleaning easier.



10) Cover the bonding area with a thin layer of C&B composite. DO NOT LIGHT CURE IT YET!



4) Measure the length of Dentapreg® UFM by using dental wax, wedjets, dental floss, etc. Remember that the strip is replacing the natural interface between the dentin and enamel and adhering to the incisal edge of the broken tooth.



11) Remove the protective paper and the plastic foil from the strip. Insert it into the uncured composite and adapt it to the required position. Dentapreg® UFM is stretchable, you can extend its width up to 10 mm. You can use Dentapreg® Fork for easier adaptation. Coat your instruments with a bit of bonding agent for easier handling.



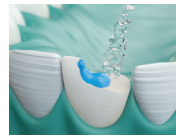
5) Apply orthophosphoric etching gel on the tooth according to the manufacturer's instructions. If a bur or micro-etching is used on the tooth, etching gel is not necessary.



12) Adapt the strip so that one end of the strip lies on the flat bottom of the preparation and the remainder of the strip protrudes from the preparation along the oral side of the tooth and creates a retentive area for the incisal edge restoration. Bend the rest of the strip back in the C&B composite if possible.



6) Rinse thoroughly and dry.



13) Light cure the adapted Dentapreg® UFM strip for 40 seconds.



7) Apply a thin layer of an adhesive system to the etched surface of the tooth.



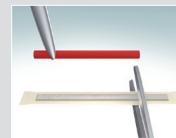
14) Rebuild the tooth from the C&B composite according to the composite manufacturer's instructions. Build the dentine parts of the tooth with dentine shades of composite necessary to cover the whole surface of the fibers with the composite. Remember to keep the cleaning spaces free.



1) Prepare the tooth for the crown.



8) Remove the Dentapreg® UFM strip from the blister and cut it with scissors to the required length. Do not touch the unprotected strip with bare hands. The use of powder-free latex in the supplied light protection box and keep it in a dark place, preferably in a refrigerator. In this manner, you can store the strip for up to 4 weeks without its properties deteriorating significantly.



15) Light cure the whole crown according to the composite manufacturer's instructions.



2) Ensure a dry working area, using a rubber dam is highly recommended.



9) Cover the bonding area with a thin layer (approx. 0.5 mm) of C&B composite. DO NOT LIGHT CURE YET!



16) Finish the crown, adjust it in the occlusion and polish it.



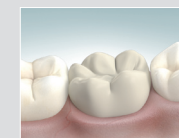
3) Measure the required length of the Dentapreg® strip by using dental wax, wedjets, dental floss, etc.



10) Remove the protective paper and plastic foil from the strip. Insert it into the uncured composite and adapt it to the tooth surface. You can use Dentapreg® Fork for easier adaptation.



17) Finished crown.



4) Apply orthophosphoric etching gel on the tooth surface according to the manufacturer's instructions



11) Light cure the adapted Dentapreg® strip for 40 seconds per tooth.



Composition

Dentapreg® SFU, SFM, PFM, PFM and UFM Dimethacrylate monomer 40 - 50 wt.% depends on the type of the product. Glass fibers 50 - 60 wt.% depends on the type of the product.
Additional contents: catalysts and stabilizers.

Contraindications

Use of Dentapreg® reinforcements is contraindicated if the patient is known to be allergic to any of the ingredients in Dentapreg® products.

5) Rinse thoroughly and dry.



12) Cover the Dentapreg® strip with a layer of C&B composite. It is necessary to cover the whole surface of the fibers with composite!



Warnings

Use protective glasses during light curing operation and protect the patient's eyes as well. Do not use Dentapreg® if protective package is damaged. Do not use Dentapreg® after the indicated date of expiration.

Recommendations

- We strongly recommend using powder-free latex or nitrile gloves when manipulating with the Dentapreg® strip.
- The Dentapreg® strip must be entirely covered with composite.
- The optimal thickness of the veneering composite to be layered on top of the fibre frame at the occlusal contact is 2 mm.
- You can use Dentapreg® UFM strip as a reinforcement of incisal edge of anterior bridge or as an additional reinforcement of the pontic for adhesively bonded composite bridges or to reinforce large composite restorations especially for patients suffering from bruxism.
- We recommend using of metal instruments as a pincer and a spatula.
- We recommend using C&B composite for Dentapreg® applications. For provisional or temporary applications you can use flowable composite.

6) Apply a thin layer of an adhesive system to the etched surface of the tooth.



13) Light cure the composite according to the manufacturer's instructions.



Manufactured by

ADM, a.s., U Vodárny 2, Brno 616 00, Czech Republic, www.dentapreg.com

Imported by

DENTAPREG AMERICA INCORPORATED, 330 S Pineapple Ave, S-110, Sarasota FL 34236, United States of America

7) Light cure the adhesive according to the manufacturer's instructions.



14) Build the crown from C&B composite according to the composite manufacturer's instructions. Build the dentine parts of the tooth with dentine shades of composite and form the enamel parts with enamel shades. Remember to keep the cleaning spaces free.

